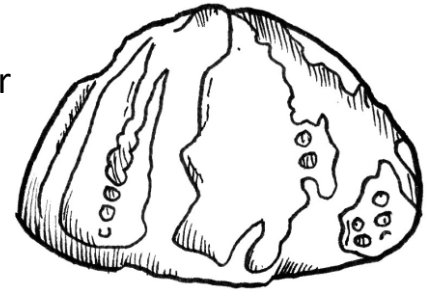
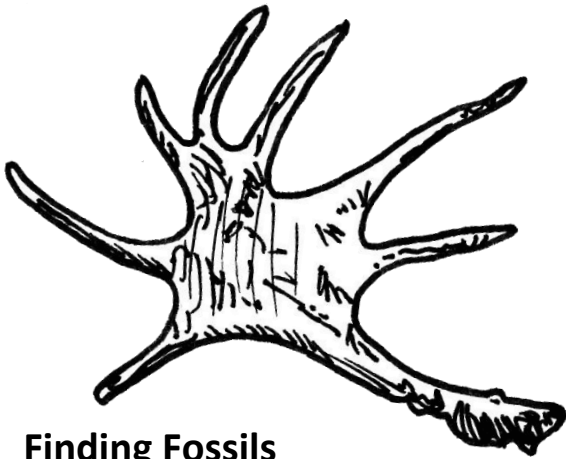


RESPONSIBLE FOSSIL COLLECTING

The Norfolk coast is one of the best places in the country to find fossils. Fossils may connect us with our distant ancestors and they form a link with the history of life on Earth. These remains are an extremely important part of our natural heritage and should be treated with the same consideration and care that we show to historical artefacts.

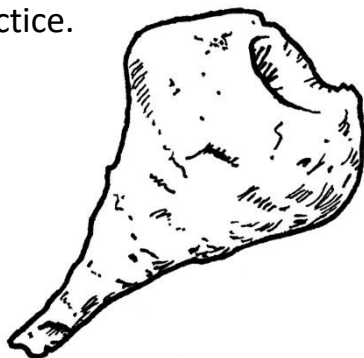


Fossil collecting is an enjoyable and rewarding experience, but only if it is carried out in a responsible manner will we be able to maintain our fossil heritage for future generations.



Finding Fossils

Finding fossils combines scientific skills with experience and a considerable amount of luck! Whether you are a research scientist, in school, or a professional collector, it is important to remember that any fossil can provide us with a great deal of scientific information. It is therefore essential to collect fossils in a way which enables this information to be preserved for later use. The guidelines on the right constitute good practice.

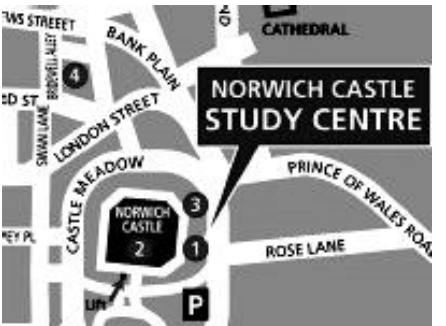





When you collect fossils:

- Stick to the footpaths provided – do not add to coastal erosion by trying to climb up or down the cliffs
- Never dig into the cliffs – it can add to erosion, is dangerous, spoils things for others, and there are plenty of fossils on the beach anyway
- Take only a few representative specimens
- Always make a note of where you find fossils – photographs are very helpful
- Write a label for your fossils, including exactly where and when it was collected, plus any other observations
- Large fossils can be problematic for individual collectors, and can be left for others to see – otherwise seek advice/help from *Norfolk Museums Service* (see contact details on reverse)
- Remember that fossil sites are for everyone to enjoy, and indiscriminate collecting will damage this resource for future visitors



Norfolk Museums Service offers a free fossil identification service, and the *Cromer Forest-Bed Fossil Project* aims to record and identify important fossils from the Norfolk coast. If you have a relevant fossil that you would like our curatorial staff to identify, find out more information about, or would like us to record it, you can take it to:

<p>Norwich Norwich Castle Study Centre The Shirehall, Market Avenue Norwich NR1 3JQ 01603 493625 museums@norfolk.gov.uk Open all year, Mon to Fri, 9am to 5pm</p>		
--	--	---

		<p>Cromer Cromer Museum Tucker Street Cromer NR27 9HB 01263 513543 cromer.museum@norfolk.gov.uk 1st April to 31st Oct, Mon to Fri, 10am to 4pm, Sat & Sun 12 noon to 4pm</p>
---	---	---

Identifications can take some time, depending on the number of objects, difficulty of enquiry and workload of the curator. Please note that we can only accept enquiries relevant to our collections, or from the Norfolk/East Anglian region.



www.ahobproject.org/EHHP/

The Cromer Forest-bed is world-renowned for the thousands of fossils it contains – such as mammoth, rhino and even hippo. The bones have been recovered by fossil collectors from sediments that have been exposed in the eroding cliffs and on the foreshore around the coasts of Norfolk and Suffolk over the last 250 years. The complex deposits date from 500,000 to over two million years ago.

The aim of the *Cromer Forest-bed Fossil Project* is to record the fossils and flint artefacts from the coastal deposits in a systematic way. A large database is being developed which will record the fossils and artefacts. The database will include fossils found in the past together with new beach finds.

Fossils can be brought into *Norwich Castle Study Centre* and *Cromer Museum* for identification and recording onto the database, and stone tools can be taken to the *Identification and Recording Service for Archaeological Finds & Portable Antiquities Scheme in Norfolk* based at the *Historic Environment Service at Gressenhall Farm and Workhouse*, for identification.

© Norfolk Museums Service/David M. Waterhouse 2018

