

DRAW, CUT, CROP!

The Super Stitchers collage making activity inspired by the **Bellamy Quilt**.



This is the Bellamy Quilt.

It was created by a couple
living in Great Yarmouth
130 years ago!

Their names were Charlotte
Alice Springall and Herbert
Bellamy.

They made the quilt
together during the year
they were engaged to be
married.



What objects
can you see
on the quilt?

You will need:

Pens, pencils, or anything
you would like to draw with.

Scissors (ask an adult for
help using these if needed!)

Scrap paper, junk mail or
magazines.

Plain paper for drawing on,
and for the base of your
collage.

Glue or tape.



JOLLY

TURK

WASSAR

Musical notation on a staff with notes and clefs.

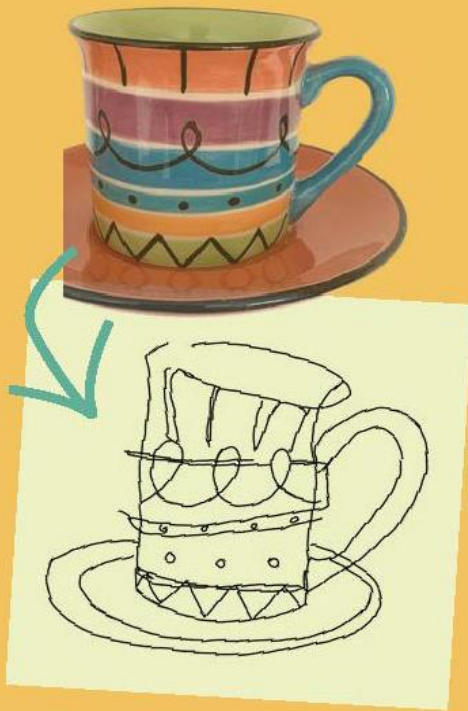
KJ

Ergo Labor Omnia Vincit

© Norfolk Museums Service

1. DRAW

Stuck? Try drawing an object that you use every day, that you like the colour of, or your favourite toy!



First, find an object that means something to you and draw it.

You can colour your drawing in or keep it simple.

Alice and Herbert made their quilt at home. They were inspired by things from around the home, like a vase, or even animals.

During our time at home, we can be inspired by the couple. Try talking to your family about what stories objects around the house have

Drawing Ideas:

Have a go at drawing the object without looking down at the paper.

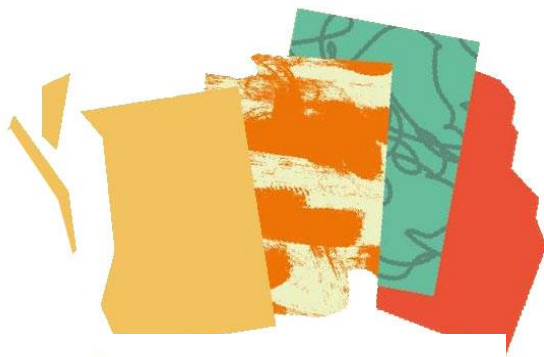
If your object is detailed, try only drawing the parts that feel are important.

Try not to use a rubber! Sometimes mistakes are the best part of a drawing.

Ready to stop? You can finish the activity at any point, or you can go all the way to step 3!



Collect scrap papers and cut them into shapes to re-create your drawing. Glue the shapes onto your plain paper base.



2.CUT

The Bellamy Quilt is very colourful and made of expensive fabrics that were brought for this special project.

What interesting papers can you find around your house? Look for magazines, old wrapping paper or junk mail.

Can't find anything? Paint, draw or scribble on plain paper to create interesting textures.

The shapes you cut don't have to be perfect, and you don't need to get every detail in either.

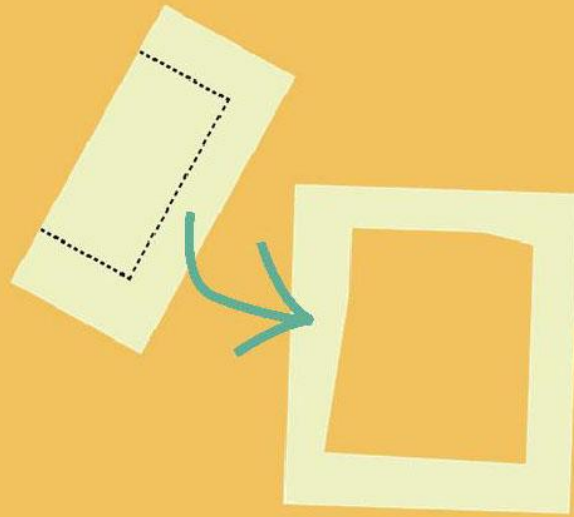
Now let's zoom in on our collage to make our quilt square.

To make a viewfinder out of scrap paper, fold the paper in half and cut out a small thin rectangle.

Open out and there you have it!



3. CROP!



Use the viewfinder to find the most interesting part of your collage.

Then, repeat step two, this time only collaging the part you've zoomed in on.



Tah Dah!

Share your square!

The Bellamy Quilt is all about collaboration.

Teach this activity to your friends and family,
and each create a square. Put them together
to create one big collage quilt!

Help us create an online quilt. Share your
square on social media using the hashtag
#NorwichCastleSuperStitchers.

Twitter: @NorwichCastle Instagram:

@norwichcastle Facebook:
/NorwichCastleMuseum

Activity and Design by Yasmin Aldrich.

Instagram: @yasmin.illustration



ARTS COUNCIL
ENGLAND