

# COLOUR, SHADOW & CHAGALL



Where does the dark come from?

What does it make me think of?

How would it be if we could go to different worlds?

What if the stars were pink?

Can we look at our world in a different way?

Inspired by  
 Marc Chagall's painting  
*L'Artiste dans son Atelier*  
 (*The Artist in his Studio*) c. 1930  
 we've been thinking about darkness,  
 light and creating other worlds.

## Colour Theory

Chagall was fascinated by colour theory and used colour in unexpected ways.  
 So, let's look at what colour theory actually is...



Colour theory explores  
 the effects colours have  
 on each other.



A major influence on the  
 development of colour  
 theory was the artist  
 Sonya Delaunay.

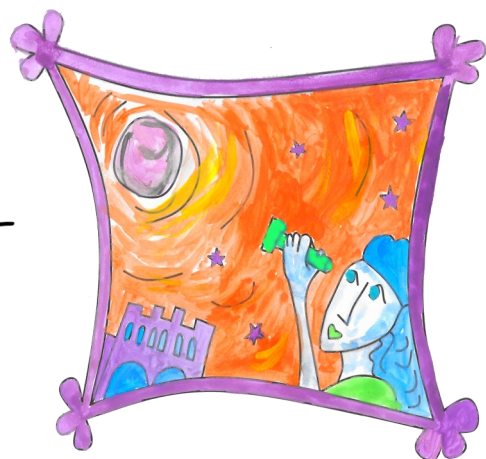


Picasso said, "When  
 Matisse dies, Chagall  
 will be the only painter  
 left who really  
 understands colour."

Let's see colour theory in action!

We've used a colour wheel to identify opposite colours and experimented with these in a picture of a moon-gazer over our very own Norwich Castle.

Look! The blues become oranges, the yellows become purples and the reds become greens.



# MAKE A SHADOW PICTURE

Now that we've explored colour theory, let's have a look at darkness and light. You can see our Chagall-inspired design at the bottom of the page—why not design your own magical world and turn it into a shadow picture? We'll show you how...

You will need:

- Black card
- White card
- Acetate or thick cellophane
- Permanent markers
- Glue
- Scissors



Fold the black card in half then cut a rectangle window out of one half.

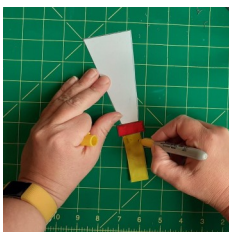
You've made a frame!

Glue the inside of the frame and stick the acetate along those edges, covering the rectangle window. Trim the acetate so that none can be seen sticking out of the sides.



Next, place a white piece of card underneath your window and using permanent markers, draw your colour theory-inspired design onto the acetate.

Remove the white card - you'll need it to make your torch.



Finally, cut out a torch-shape from white card, including a triangular 'beam' of light. This beam needs to be as long as the rectangular window's width.

Colour in the handle of the torch, but not the beam. Slide the beam between the black background and the acetate.

As you move your torch, your picture will 'light up'!



## Share!

We'd love to see what you've made!

Share on our social media platforms using the hashtag:

#InThePicture

 @NorwichCastle

 @NorwichCastle

 @NorwichCastleMuseum